

2020 Model Year Standard Specification



Principal Dimensions

Length overall (incl. pulpit):

46'6" (14.2m)

Length of hull:

42' (12.8m)

Beam (incl. gunwale):

14'2" (4.32m)

Berths:

4 - 5

Draught:

3'10" (1.17m) unloaded

Height above waterline

(incl. arch & nav. light mast):

18'2" (5.55m)

Transport height:

16' (4.87m)

Fuel capacity:

286 gallons / 343 US gallons
(1,300 litres)

Water capacity (incl. calorifier):

88 gallons / 105 US gallons
(400 litres)

Engines & Performance

2 x Volvo Penta IPS600 D6-440, diesel (880hp):

32 knots

2 x Volvo Penta IPS650 D6-480, diesel (960hp):

33 knots (est. max.)

Type approval:

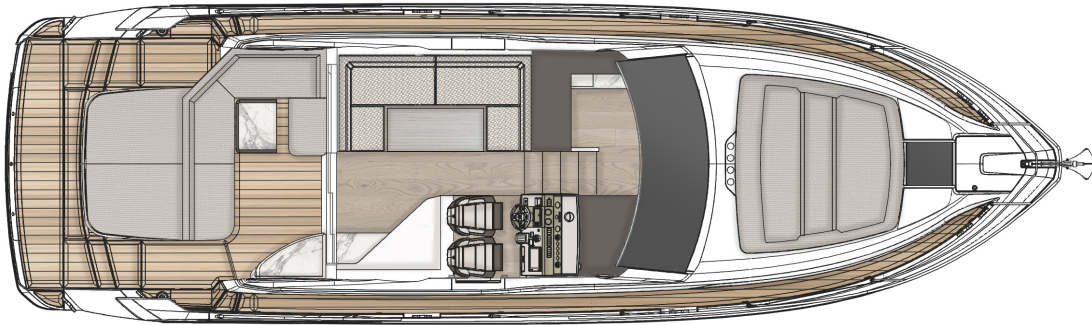
B

Max. persons capacity:

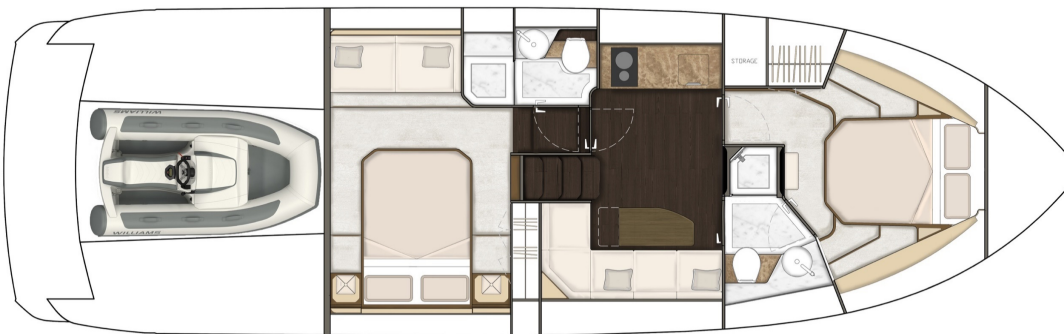
12

Deck Plans

Main Deck



Lower Deck



Lower Deck - 3 cabin option



Deck

Anchor chain locker	Rubbing strake
Anchor winch controls	Self-stowing Delta® anchor (20kg)
Anchor winch (electric)	Stainless steel bow fairleads
Calibrated anchor chain	Stainless steel bow, spring & stern cleats
Chain stopper (10mm)	Stainless steel handrails
Dinghy garage (to fit Williams 280 MiniJet)	Stainless steel pulpit
Ensign staff	Stainless steel stemhead roller
Fender set	Stainless steel transom wing cleats
Full set of IMCO navigation lights	Teak-laid bathing platform
High capacity emergency manual bilge pump system with changeover valves	Toughened glass curved single piece windscreen
Hot & cold water transom shower	Transom gate from cockpit to integral bathing platform
Moulded non-slip deck surface	Twin horns
Recessed self-draining area on foredeck for coachroof sun cushions	Water filler
Riding light	Windscreen washers
	Windscreen wipers

Helm Position

USB socket	Garmin GMi 20 digital multi-function instrument system with colour display
Bilge pump switches with integral operating warning lights & audible alarms	Garmin VHF marine radio
Twin helm seats	Volvo 7" diagnostic display
Controls for engine bay fire extinguisher system	Helm position indicator
Drinks holders	High-speed magnetic compass
Electronic single-lever throttle & gear controls for port & starboard engines	IPS joystick
Folding foot plinth	Opening window (manual operation)
Fuel gauges	Remote anchor winch controls
Full engine instrumentation including; tachometers, oil pressure gauges, temperature gauges, audible alarms & engine hour meters	Searchlight with remote control at helm
	Waterproof switches for navigation & riding lights, windscreen wipers & engine bay extractor fan

Electrical Systems

All 240V, 24V & 12V circuits (where applicable) protected by circuit breakers with main electrical load control panel

Electrical sockets

Heavy duty circuit breakers

Isolating switches to all batteries

12 Volt

Batteries – 2 x heavy duty batteries for domestic services

1 x heavy duty battery for exclusive port engine starting

1 x heavy duty battery for exclusive starboard engine starting

Emergency battery coupling system permits starboard engine to start port engine if domestic batteries accidentally discharged

240 Volt

Polarity check & earth leakage protection system

Regulated battery charger

Shore power supply

Cockpit

Bar unit with sink

Bathing platform lights

Boat hook

Central dining area with foldaway GRP table

Companion seating to helm

Drinks holders

Engine bay access hatch

Fender stowage

Fenders x 6

Fusion audio unit with Bluetooth connectivity

Life raft stowage

Manual bilge pumps

Mooring warps

Moulded non-slip deck surface

Stainless steel handrails

Step for side deck access

Stowage lockers

USB socket

Warp lockers

Wrap around seating with sunbed conversion

Waterproof speaker's x 2

Interior Décor

Choice of interior finishes from the Amalfi, Capri, Hamptons or St Tropez interior styling ranges selected by the Fairline Yachts Design Studio

Hullform & Construction

Antifouling protection to hull

Deep 'V' hull

Design, layout & detailing by AM Yacht Design and the Fairline Yachts Design Studio

Full length moulded spray deflectors

Hard top with electric sliding canvas roof

Hull colour – White

Integrally moulded engine bearers

Polyurethane foam cores throughout deck for strength & thermal insulation

Resin infused hull & internal liner

Transverse & longitudinal strengthening stringers throughout hull

Lower Saloon

Access to day head	'L' shape sofa
Aerial & connections for television	LED ceiling lights
Companionway timber steps with handrail	Lockers (overhead)
First aid kit	Sliding door to cockpit with integral blind system
Fixed height dining table	Stowage locker under dinette seating
Hull window	

Galley

Control panel for 12V/240V domestic electrical circuits	LED ceiling lights
Crockery stowage	Lockers (overhead)
Extractor fan	Microwave combi oven
Fire extinguisher	Sink with hot & cold mixer tap
Solid work surface with covers	Fridge/freezer with automatic 12V/240V change-over
Ceramic hob (2 burner)	Underfloor larder
Integrated waste bin	Work surface lights
Lacquered cupboard doors	

Forward Cabin

Access to en suite	LED ceiling lights
Drawers under bed	Opening portholes
Full length double bed with optional scissor berth	Overhead glazing
Full length mirror	Reading lights
Hatch to foredeck	Wardrobe
High level lockers	

Forward Cabin En Suite

Automatic shower tray pump-out system	Full standing-height shower with integral shower tray & adaptable shower head
Electric silent-flush freshwater toilet	Hand basin with hot & cold water
Extractor fan	Mirror
Solid surface vanity unit locker & basin with hot & cold pressurised water	Opening porthole
Full set of bathroom fittings	Stowage locker

Mid Cabin

Access to en suite	LED ceiling lights
Drawer pack	Opening portholes
Full length double bed with optional conversion to twin single beds	Reading lights
Full length mirror	Wardrobe
	Drawer pack

Mid Cabin En Suite

Automatic shower tray pump-out system
 Electric silent-flush freshwater toilet
 Extractor fan
 Foundations® vanity unit locker & basin with hot & cold pressurised water
 Full set of bathroom fittings

Full standing-height shower with integral shower tray & adaptable shower head
 Hand basin with hot & cold water
 Mirror
 Opening porthole

Starboard Bunk Cabin (optional)

Hanging Locker
 2 x bunk beds
 Mirror
 Reading lights

Engines & Sterngear

Automatic bilge pumps for engine bay with a manual 'on' override
 Automatic engine bay fire extinguisher system
 Electric engine bay fans
 Electric trim tabs with cathodic protection

Engine bay lights
 Engine room soundproofing
 Sea cocks on all inlets/outlets below waterline

Fuel System

Emergency fuel shut-off valves
 High capacity water separators & fuel filters

Individual fillers & vents to port & starboard
 Twin fuel tanks with balance pipe

Freshwater System

Automatic, pressurised supply
 Calorifier hot water system

Water tank

Black Waste

Holding tank

USA Specifications

In addition to or in lieu of those listed above

Voltage - 2 x 110V (220V) 60Hz

Whilst every effort is made to keep all sales literature up to date, it should not be regarded as an infallible statement of current specifications & does not constitute an offer for the sale of any particular boat. We continually seek to improve the specification & design of our boats, so alterations & upgrades to specifications take place continually.

Appointed dealers are not agents of Fairline Yachts Ltd & are not authorised to commit Fairline Yachts Ltd by any express or implied undertaking or representation.

Performance Figures: Power quoted in our literature for diesel inboard engines is crankshaft output.

Performance Estimates: Performance estimates are given in good faith but are in no way guaranteed for any particular model. Dirt on the bottom of the boat, damage to the propellers, engine tuning, external water & air temperatures & the weight of crew, fuel & water carried can all adversely affect performance. For those & other reasons we can give no performance guarantees